



Expert Peer Review

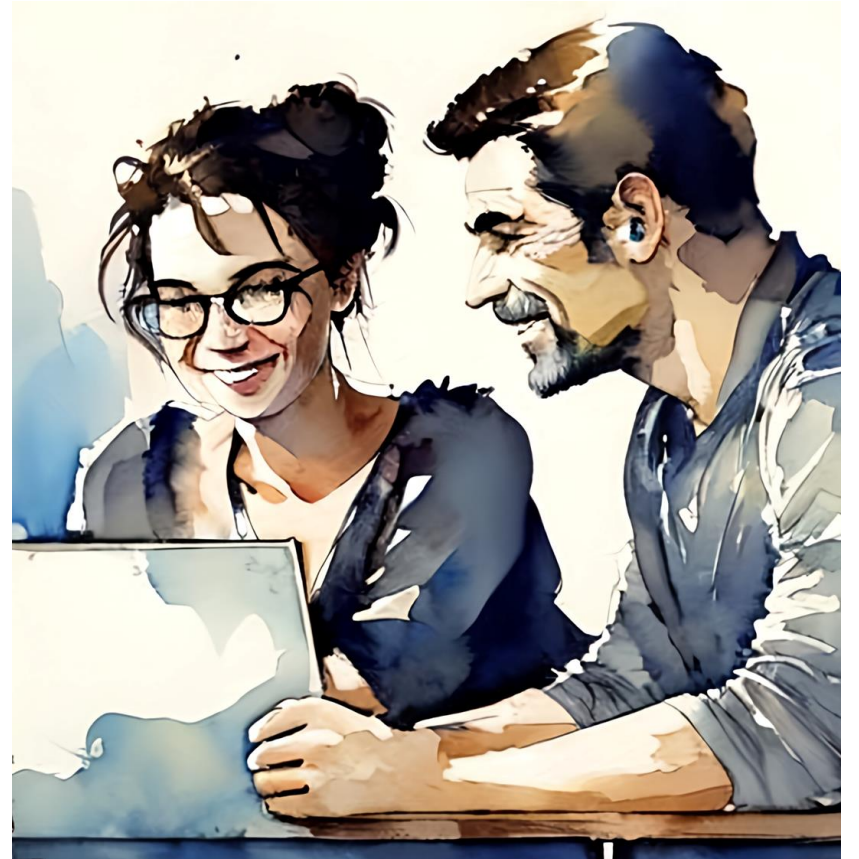
Support for Literature Searches

Paul.Stevenson7@nhs.net

Library Lead – Airedale and Bradford NHS Foundation Trusts

What is Peer Support

- Expertise and experience of colleagues is used to provide guidance and advice to those with less experience.
- Ensures that expertise is shared and that opportunities for learning and improvement are provided.
- Supportive





Feedback from Previous Activities

Limitations

- People reviewing the searches were sometimes inexperienced
- Lack of consistency in feedback
- Learning was only shared with those directly involved in the review.
- Some people reluctant to be identified as in need for support

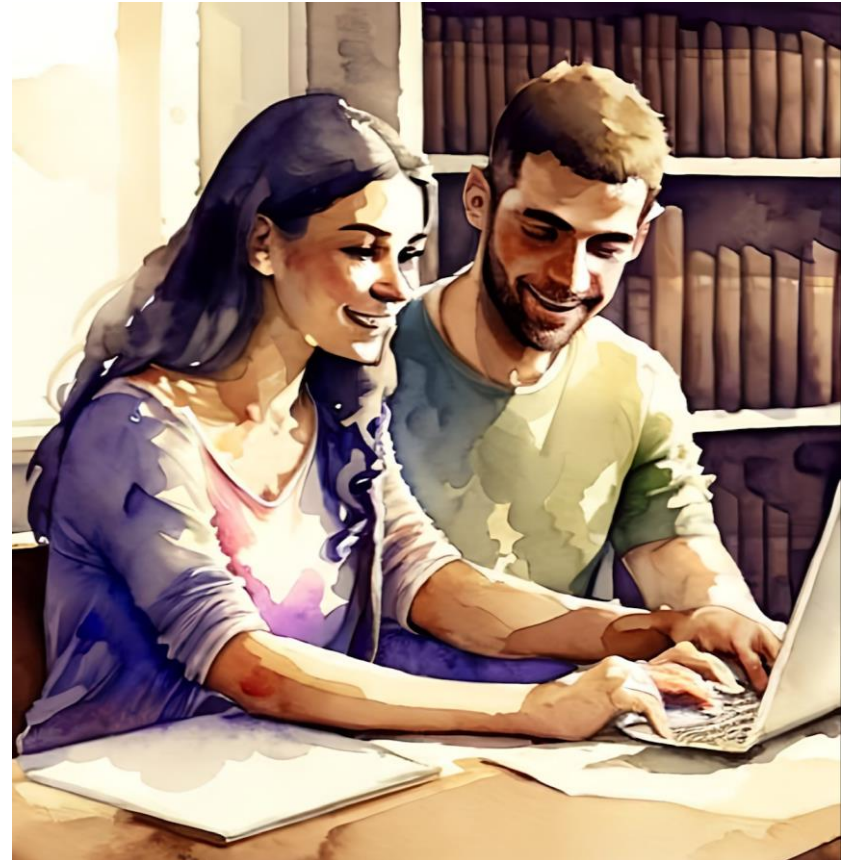
Main Barriers Identified

- Time
- Concern about Feedback – Giving and Receiving
- Low Levels of Self-Efficacy
- Subjectivity of Search Process
- Lack of Opportunity



Main Requests for Successful Facilitation

- Standardised Structure and Process
- Availability of Training and Support
- Option for Anonymity – Reviewers and Recipients
- Multiple Peers for a Single Search
- Evidence of Participation of CPD / Chartership
- Supportive , Accessible and Psychologically Safe





Other Comments

- Community of Practice
- Social Interaction
- Optional Process
- General Consensus that Peer Review Support is Desirable and Wanted.

FutureNHS Site

<https://future.nhs.uk/LiteratureSearchExpertPeerReview>

Literature Search - Expert Peer Review

Create a new item



Welcome to the Literature Review - Peer Review Workspace

This workspace provides NHS Library and Knowledge staff with facilities to share literature searches for peer support and review.

For both beginners and more experienced searchers there is merit in seeking and obtaining feedback on examples of searches undertaken. Such feedback provides opportunities for both continuous improvement and provides assurance from peers in terms of the quality of professional practice.



Submit a Literature Search
for Peer Review



Discussion Forums



Become a Peer Reviewer

We require peer reviewers who have high levels of competency to provide review and feedback to our workforce. Your contribution to this process will increase the general skills, ability, knowledge and expertise of your colleagues, leading to high service standards across the NHS.

FutureNHS Site

<https://future.nhs.uk/LiteratureSearchExpertPeerReview>


Useful Documents, Guides and Links.


Create a new item

Guides and other documents that may be of use to library and knowledge staff undertaking literature searches.

 [Literature Search - E Learning](#)

 [HEE Expert Searching Resources Website](#)

 [Evidence Searching – Troubleshooting Guide](#)

 [National searching guidance](#)

Sort by Date



[Guidance on Feedback \(Giving and Receiving\)](#)

Document to provide some basic guidance on effective feedback. This document provides a short generic overview of providing feedback, the suggested structure to use for providing feedback on literature searches in this project, and some basic information on receiving feedback and using it effectively.

Modified 3 days ago.



[Peer Review - Guidance for Peer Reviewers \(1\)](#)

If you are considering being a peer-reviewer this document will give you some information on what to expect and the basic processes involved.

Modified 5 days ago.

Modified 1 year ago.

 Add tag

General Discussion Forum - Peer Review Literature Searches

Use this forum to begin , contribute or view discussions around the topic of literature searching and peer review of litera



[What are your views on the Peer Review Process](#) Pinned

We are all learning new skills here, and our peer reviewers would appreciate any comments or feedback you provide. Please provide constructive feedback or comments in this discussion

Started by [Paul Stevenson](#) 1 year ago.

[Read this discussion](#) and 0 replies



[How long does it take to complete a literature search?](#)

I'm interested to know how long people spend doing a literature search.

I'm aware there's a bit of variation dependent on the search topic, but what would the average time be to complete a search?

Started by [Paul Stevenson](#) 1 year ago.

[Read this discussion](#) and 0 replies

Submitting a Request

Completed Feedback - Anonymised

Read feedback that has been provided previously on a range of literature searches.
Use this for your own learning , or for ideas and tips on how to search for a specific topic.



Feedback 1 - Cultural Competency and Palliative Care
Modified 5 days ago.

Add tag

Comments ^

PS

Comment on this folder

1. Please give details of the initial literature search request / enquiry

Enter your answer

2. Please provide a copy of your search strategy in this text box
- Include details of sources searched as well as the terms and any limits you have used.

Enter your answer

3. Please provide a short example of the results you provided for this search request.
- If you wish to share a copy of your search results please add a link to your file in this text box, or email the file directly to paul.stevenson7@nhs.net

Enter your answer

4. Provide any additional comments you have about this search. i.e. how you felt about it, what went well , what was difficult, any specific queries/uncertainties you have.

Enter your answer

5. How would you like to receive feedback *

Feedback by email

Feedback by Teams call

Anonymous - Feedback is anonymised and placed in the shared feedback folder for you (and other members of the group) to view.

6. If you wish to receive Feedback by email or Teams , please provide an email address for contact.

Enter your answer

Peer Review Form

- Standardised – PRESS format
 1. Initial interpretation of enquiry
 2. Text Based Search
 3. Subject Heading Based Search
 4. Boolean & Proximity Operators
 5. Filters & Limits
 6. Results Presented
 7. Summary / Additional Comments

20. If NOT has been used, is this likely to have excluded potentially relevant results?

- Yes
 No
 N/A

21. Could precision be improved by using proximity operators (e.g. adj4) or phrase searching ?

- Yes
 No
 Partially

22. Have the correct search terms been combined with the correct Boolean operators?

- Yes
 No

23. Feedback and Comments on the use of **Boolean and proximity operators** in this search.

Enter your answer

Back

Next



Next Steps

- Develop Peer Reviewer Training
- Produce Publicity and Marketing

Recruit a Pool of Peer Reviewers

<https://future.nhs.uk/LiteratureSearchExpertPeerReview>



Questions / Comments

Paul.Stevenson7@nhs.net